

Material and Finish Codes

Z1 - CS, HD Galvanized, Chem Treated G90
Z2 - CS, .0002 min Zinc, Clear

**Clamping
Diameter
(D)**

**Center to
Center
(L)**

$\frac{aa}{16}$

$\frac{aa + bb + 3}{32}$

$\pm .015$

$\pm .031$

Exceptions to the rule for 'L' are:

CD-0407 = .468

CD-1009 = .718

Material Thickness (T)

aa from
03 to 07

aa from
08 to 12

aa from
13 to 16

.032

.048

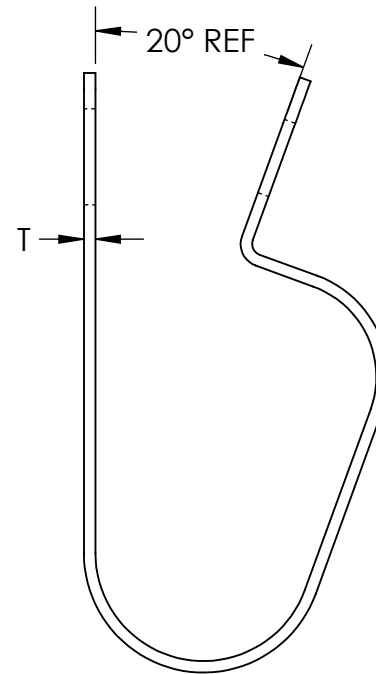
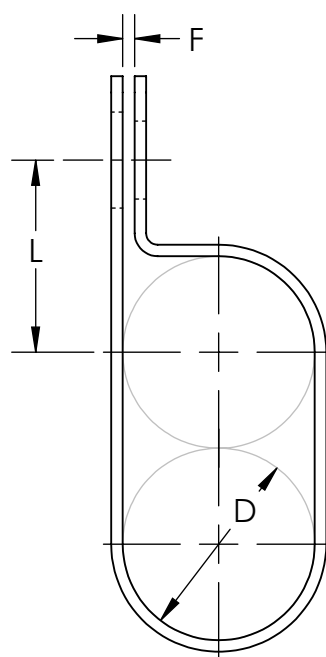
.060

$\pm .002$

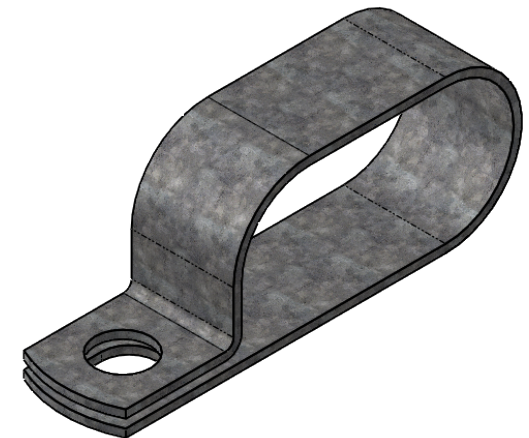
Exceptions to the rule for 'T' are:

CD-0717 = .048

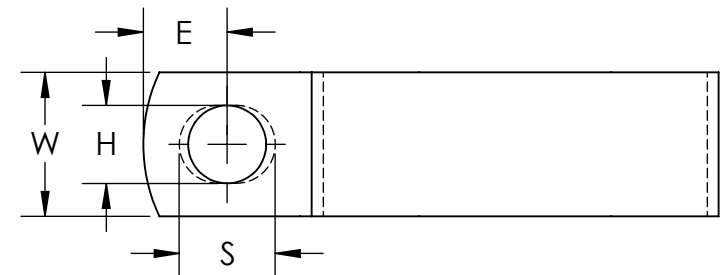
bb	Hole Diameter (H)	Hole Center to End (E)	Width (W)	Slot Length (S)	Gap (F)	
					aa from 03 to 05	aa from 06 to 16
07	.203	.218	.500	.203	N/A	.031
09	.281	.312		.375	.062	
11	.343	.375	.437			
13	.406	.437	.750	.500		
15	.468	.500	.875	.562		N/A
17	.531	.562	1.000	.625		
	± .005	± .015	± .010		± .031	



As Supplied
(Open Position)



Note: CD clamps have a circular hole with diameter H on the top side and a slotted hole with length S, and width H, on the bottom side.



EXPLANATION OF PART CALLOUT

CD - aa bb mf

MATERIAL AND FINISH CODE
SECONDARY DIMENSIONS CODE
CLAMPING DIAMETER CODE
PART SERIES

EXAMPLE OF PART CALLOUT

CD - 16 13 Z1

This part number indicates the clamp will have dimensions:

Clamping Diameter (D) = 1.000 Hole Center To End (E) = .437
Hole Diameter (H) = .406 Gap (F) = .062
Center-to-Center (L) = 1.000 Material Thickness (G) = .060
Width (W) = .750 Slot Length (S) = .500
Made from CS, Hot Dipped Galvanized,
Chem Treated G90

KMC
THE ORIGINAL CLIP & CLAMP CO.

1221 SOUTH PARK STREET
PORT WASHINGTON, WI 53074
(262) 377-5030

PROPRIETARY AND CONFIDENTIAL

THE INFORMATION CONTAINED IN THIS DRAWING IS THE SOLE PROPERTY OF KICKHAERER MANUFACTURING COMPANY. ANY REPRODUCTION IN PART OR AS A WHOLE WITHOUT THE WRITTEN PERMISSION OF KICKHAERER MANUFACTURING COMPANY IS PROHIBITED.

PART SERIES
MASTER PRINT

CD

DOUBLE TUBE CLAMPS

DRAWN

CHECKED

BC

KW

8/22/17

9/11/18

NOT TO SCALE