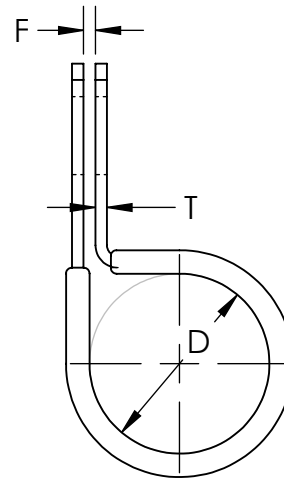


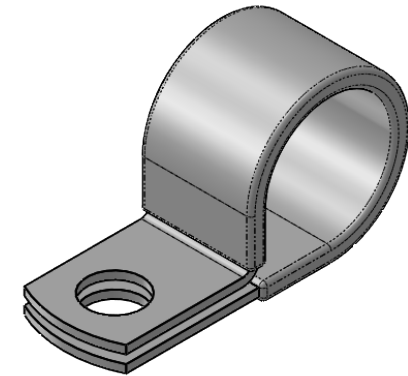
Material and Finish Codes

Z1 - CS, HD Galvanized, Chem Treated G90
Z2 - CS, .0002 min Zinc, Clear

Cushion is Black Vinyl, 1/32" Thick



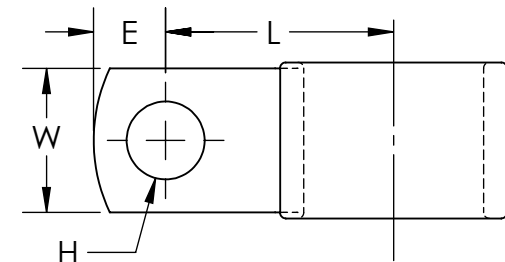
As Supplied
(Closed Position)



Note: CCV clamps have circular holes on the top and bottom sides with diameter H

Clamping Diameter (D)	Center to Center (L)
$\frac{aa - 1}{16}$	See KMC Catalog
± .031	± .031

bb	Hole Diameter (H)	Hole Center to End (E)	Width (W)			Gap (F)			Material Thickness (G)		
			aa from 05 to 07	aa from 08 to 15	aa from 16 to 33	aa from 05 to 17	aa from 18 to 24	aa from 25 to 33	aa from 05 to 06	aa from 07 to 11	aa from 12 to 33
09	.281	.250	.625	.625	.625	.032	.062	.125	.032	.048	.060
11	.343	.312			.750						
13	.406	.375	.750	.750							
15	.468	.437		.875	.875						
17	.531	.500	.875	1.000	1.000						
	± .005	± .015	± .010			± .031					



EXPLANATION OF PART CALLOUT

CCV - aa bb mf
 ↑ ↑ ↑
 MATERIAL AND FINISH CODE
 SECONDARY DIMENSIONS CODE
 CLAMPING DIAMETER CODE
 PART SERIES

EXAMPLE OF PART CALLOUT

CCV - 16 13 Z1

This part number indicates the clamp will have dimensions:
 Clamping Diameter (D) = .937
 Hole Diameter (H) = .406
 Center to Center (L) = 1.187
 Width (W) = .750
 Hole Center to End (E) = .375
 Gap (F) = .032
 Material Thickness (G) = .060

Made from CS, Hot Dipped Galvanized,
Chem Treated G90

KMC
 THE ORIGINAL CLIP & CLAMP CO.

1221 SOUTH PARK STREET
 PORT WASHINGTON, WI 53074
 (262) 377-5030

PROPRIETARY AND CONFIDENTIAL

THE INFORMATION CONTAINED IN THIS DRAWING IS THE SOLE PROPERTY OF KICKHAEFER MANUFACTURING COMPANY. ANY REPRODUCTION IN PART OR AS A WHOLE WITHOUT THE WRITTEN PERMISSION OF KICKHAEFER MANUFACTURING COMPANY IS PROHIBITED.

PART SERIES
MASTER PRINT

CCV

TUBE CLAMPS

DRAWN

CHECKED

BC

KW

8/22/17

9/11/18

NOT TO SCALE